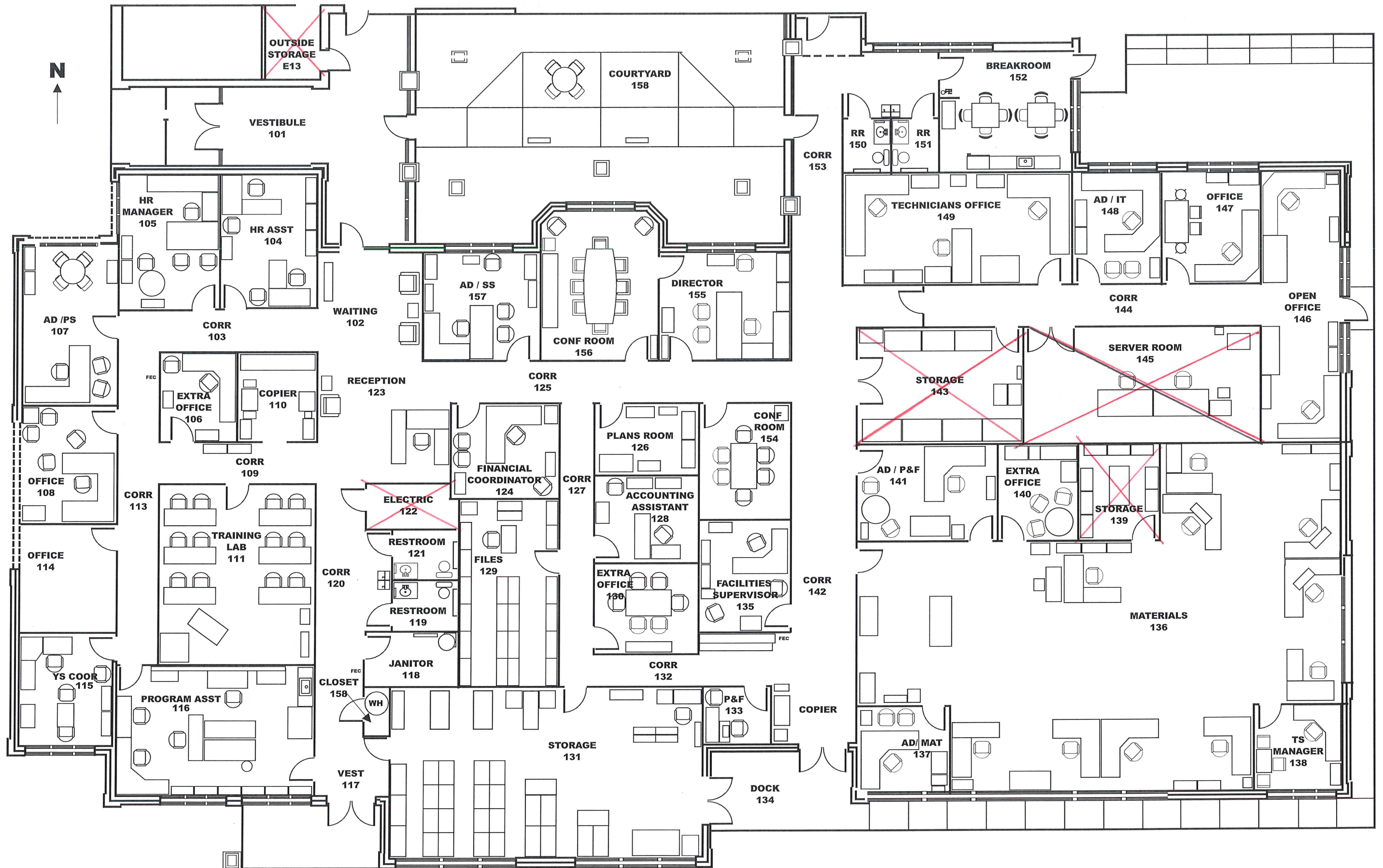
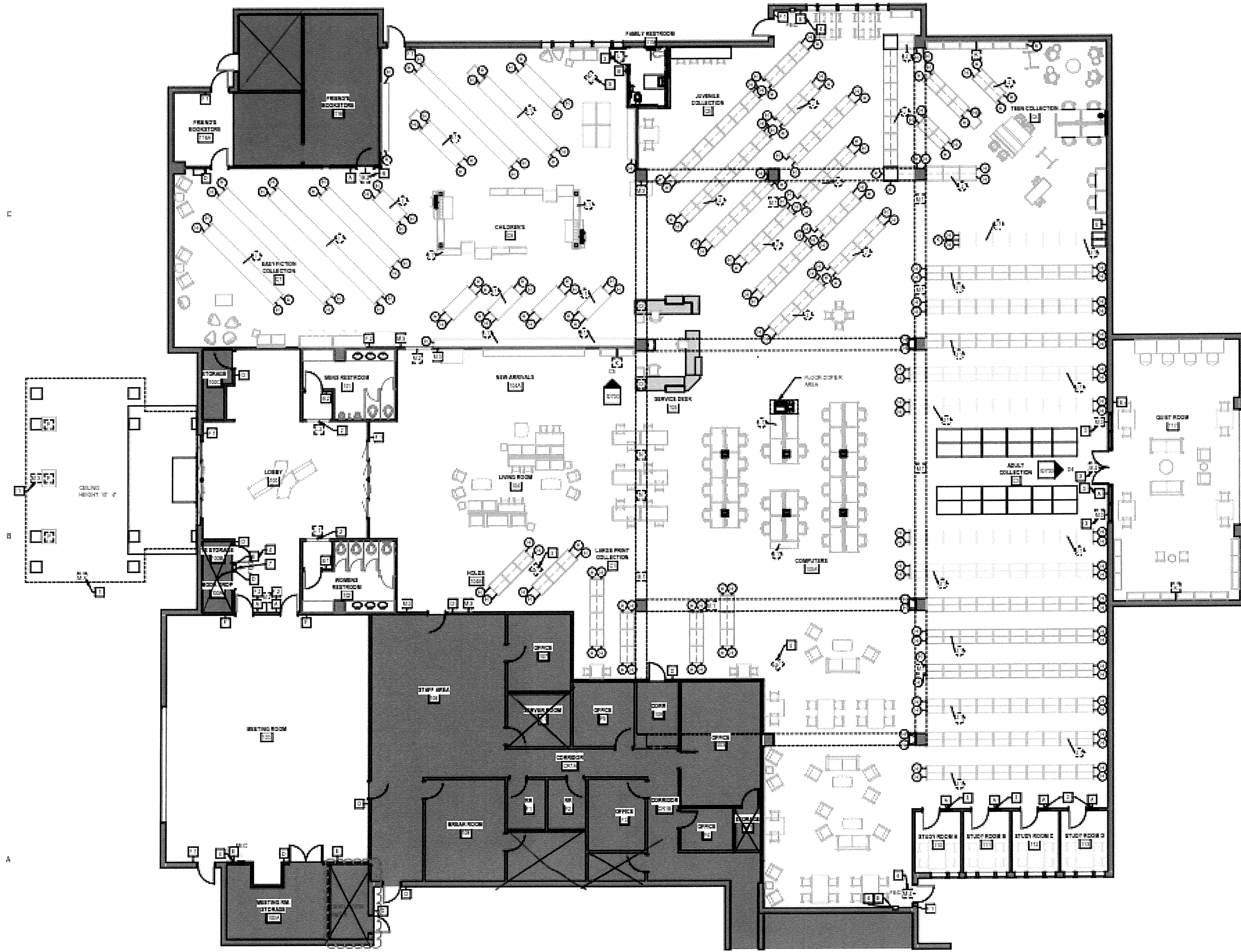
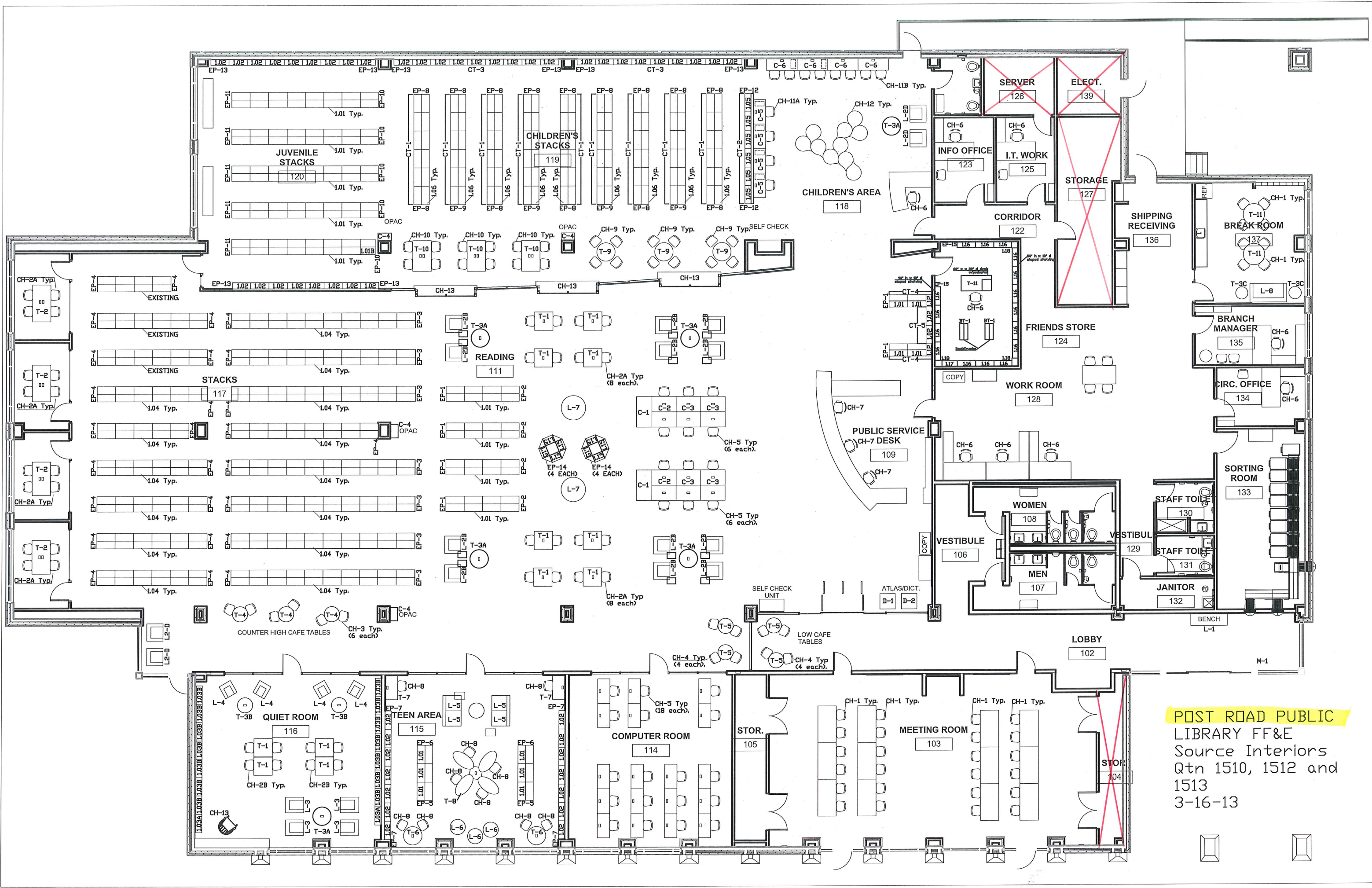


FORSYTH COUNTY PUBLIC LIBRARY FLOOR PLAN FOR HQ



CUMMING LIBRARY





POST ROAD PUBLIC LIBRARY FF&E
 Source Interiors
 Qtn 1510, 1512 and 1513
 3-16-13

FINISHES AND MATERIALS SCHEDULE

KEY	MANUFACTURER	PATTERN / ITEM NO	COLOR	SIZE	FINISH	FIRE RATING	INSTALLATION	NOTES	CONTACT	
06 41 16	PLASTIC LAMINATE-CLAD ARCHITECTURAL CABINETS									
PLAM-1	FORMICA	FIRE-RATED LAMINATE	5787 TAUPE WALNUT		NO NATURAL GRAIN / GRADE 32 (VERTICAL SURFACES) / GRADE 50 (HORIZONTAL SURFACES)	CLASS A ASTM E 84		USE COORDINATING PVC EDGE BAND	SHERI REED: 704-534-7300 SHERI.REED@FORMICA.COM	
PLAM-2	WILSONART	STANDARD LAMINATE	4877 GREY MESH		38 FINE VELVET FINISH	CLASS A ASTM E 84		USE COORDINATING PVC EDGE BAND	SARAH HARRIS: 818-810-7023 SARAH.HARRIS@WILSONART.COM	
PLAM-3	FORMICA	FIRE-RATED LAMINATE	CITADEL		MATTE / GRADE 32 (VERTICAL SURFACES) / GRADE 50 (HORIZONTAL SURFACES)	CLASS A ASTM E 84		USE COORDINATING PVC EDGE BAND	SHERI REED: 704-534-7300 SHERI.REED@FORMICA.COM	
PLAM-4	FORMICA	COLOR CORE	9285 WHITE TWILL		58 MATTE FINISH	CLASS A ASTM E 84		USE COORDINATING PVC EDGE BAND	SHERI REED: 704-534-7300 SHERI.REED@FORMICA.COM	
PLAM-5	PONITE	THRU-COLOR	5806 INDIGO BLUE		TEXTURED SUDE	CLASS A ASTM E 84		USE COORDINATING PVC EDGE BAND	BETTY GERULA: 704-614-3985 BETTY_GERULA@PANOLAM.COM	
PLAM-6	MEYHAR	THRU-COLOR	5505 AQUA LAGOON		TEXTURED	CLASS A ASTM E 84		USE COORDINATING PVC EDGE BAND	BETTY GERULA: 704-614-3985 BETTY_GERULA@PANOLAM.COM	
PLAM-7	MEYHAR	THRU-COLOR	5V7410 LIMBADE		TEXTURED	CLASS A ASTM E 84		USE COORDINATING PVC EDGE BAND	BETTY GERULA: 704-614-3985 BETTY_GERULA@PANOLAM.COM	
09 29 00	GYPSUM BOARD									
RV-1	FRY REGLET	DRM 50-50	PAINTED METAL	1/2" X 1/2"						
09 30 13	CERAMIC TILING									
CT-1	ATLAS CONCORDE USA	FRAY	METAL WHITE	12" X 24"	COLORBODY TILE			GROUT: LATICRETE SPECTRA LOCK 2000G. COLOR: TBD. THICKNESS: 1/8"	MELISSA PURVIS: MELISSA@PALMETTO TILE.COM	
CT-2	ATLAS CONCORDE USA	FRAY	SMOKE	12" X 24"	COLORBODY TILE			GROUT: LATICRETE SPECTRA LOCK 2000G. COLOR: TBD. THICKNESS: 1/8"	MELISSA PURVIS: MELISSA@PALMETTO TILE.COM	
CT-3	ATLAS CONCORDE USA	FRAY	SMOKE	12" X 24"	COLORBODY TILE			GROUT: LATICRETE SPECTRA LOCK 2000G. COLOR: TBD. THICKNESS: 1/8"	MELISSA PURVIS: MELISSA@PALMETTO TILE.COM	
TR-1	SCHLUTER	SCHNEE	BRUSHED STAINLESS STEEL					SMALL BE USED AT ALL EXPOSED TILE EDGES AND AS A COVE CAP FOR EPOXY	KEVIN MUSSER: 410-727-2416 KMUSSE@SCHLUTER.COM	
09 65 13	RESILIENT BASE AND ACCESSORIES									
RB-1	JOHNSONITE (TARKETT)	BASEWORKS TS RUBBER BASE WITH TOE	TBD	1/2" H X 120' COIL		CLASS 1 ASTM E 648			JESSICA KESSER: JESSICA.KESSER@TARKETT.COM	
RB-2	JOHNSONITE (TARKETT)	MILLWORK PROFILE / REVEAL (MW-XX-F6)	TBD	3/8" THICK, 6' H		CLASS 1 ASTM E 648			JESSICA KESSER: JESSICA.KESSER@TARKETT.COM	
TRS-1	SCHLUTER	RENOUO	SATIN ANNOZOD ALUMINIUM					EPX TO SC	KEVIN MUSSER: 410-727-2416 KMUSSE@SCHLUTER.COM	
TRS-2	JOHNSONITE (TARKETT)	EDGE GUARD (EG-XX-J)	TBD					FRT TO SC	JESSICA KESSER: JESSICA.KESSER@TARKETT.COM	
TRS-3	SCHLUTER	SCHNEE	SATIN ANNOZOD ALUMINIUM					EPX TO CPT	KEVIN MUSSER: 410-727-2416 KMUSSE@SCHLUTER.COM	
09 65 19	RESILIENT TILE FLOORING									
FRT-1	FORBO	FLOTEK SAVANNAH	PEARL	25 X 100 CM		CLASS 1 ASTM E 648			MARTY GBLIN: 252-622-7224 MARTIN.GBLIN@FORBO.COM	
FRT-2	FORBO	FLOTEK METRO	OTRUIS	25 X 100 CM		CLASS 1 ASTM E 648			MARTY GBLIN: 252-622-7224 MARTIN.GBLIN@FORBO.COM	
LVT-1	MILLIKEN	LIGHT STITCH	REVEAL	25 X 100 CM; 3MM THICK		CLASS 1 ASTM E 648			HEDI BURMEISTER: 704-661-1876 HEDI.BURMEISTER@MILLIKEN.COM	
LVT-2	MILLIKEN	LIGHT STITCH	DM	25 X 100 CM; 3MM THICK		CLASS 1 ASTM E 648			HEDI BURMEISTER: 704-661-1876 HEDI.BURMEISTER@MILLIKEN.COM	
09 67 23	RESINOUS FLOORING									
EPK-1	STONHARD	STONTEC LITF, LARGE FLAKES	SHENANDOAH BLUFF	1/8" THICK, 6' X COVED BASE	MATTE (WITH CPT)	CLASS 1		REF SPECIFICATIONS	JUSTIN CLARKE: 704-351-3049 JUSTIN.CLARKE@STONHARD.COM	
09 68 13	TILE CARPETING									
CPT-1	MILLIKEN	MAJOR FREQUENCY: DISTORTION	TREMOR	25 X 100 CM	INTEGRAL CUSHION BACKING	CLASS 1 ASTM E 648			HEDI BURMEISTER: 704-661-1876 HEDI.BURMEISTER@MILLIKEN.COM	
CPT-2	MILLIKEN	MAJOR FREQUENCY: VIBRATION	TREMOR	25 X 100 CM	INTEGRAL CUSHION BACKING	CLASS 1 ASTM E 648			HEDI BURMEISTER: 704-661-1876 HEDI.BURMEISTER@MILLIKEN.COM	
CPT-3	MILLIKEN	MAJOR FREQUENCY: VIBRATION	RUSTLE	25 X 100 CM	INTEGRAL CUSHION BACKING	CLASS 1 ASTM E 648			HEDI BURMEISTER: 704-661-1876 HEDI.BURMEISTER@MILLIKEN.COM	
CPT-4	MILLIKEN	MAJOR FREQUENCY: DISTORTION	RUSTLE	25 X 100 CM	INTEGRAL CUSHION BACKING	CLASS 1 ASTM E 648			HEDI BURMEISTER: 704-661-1876 HEDI.BURMEISTER@MILLIKEN.COM	
WOF-1	TANDUS-CENTIVA	ADRASME ACTION II	WINTER GRAY	24" X 24"		CLASS 1 ASTM E 648			JESSICA KESSER: JESSICA.KESSER@TARKETT.COM	
09 72 00	WALL COVERINGS									
WC-1	WOLF GORDON	LEGACY PAVOT	DRZZLE	54" WIDE		CLASS A	REVERSE HANG, RANDOM MATCH		MICHELLE HODGES: 704-674-6591 MICHELLE.HODGES@WOLFGORDON.COM	
WC-6	DESIGNTEX	DW11, DNA	CUSTOM PRINT	54" WIDE		CLASS A	REF MANUFACTURERS INSTALLATION INSTRUCTIONS	"S2" PRINT SURFACE	JANYE WILKINS: 843-506-0801 JWILKINS@DESIGNTEX.COM	
WC-7	DESIGNTEX	DW11, DNA	CUSTOM PRINT	54" WIDE		CLASS A	REF MANUFACTURERS INSTALLATION INSTRUCTIONS	"S2" PRINT SURFACE	JANYE WILKINS: 843-506-0801 JWILKINS@DESIGNTEX.COM	
WC-8	DESIGNTEX	DW11, DNA	CUSTOM PRINT	54" WIDE		CLASS A	REF MANUFACTURERS INSTALLATION INSTRUCTIONS	"S2" PRINT SURFACE	JANYE WILKINS: 843-506-0801 JWILKINS@DESIGNTEX.COM	
WC-9	DESIGNTEX	DW11, DNA	CUSTOM PRINT	54" WIDE		CLASS A	REF MANUFACTURERS INSTALLATION INSTRUCTIONS	"S2" PRINT SURFACE	JANYE WILKINS: 843-506-0801 JWILKINS@DESIGNTEX.COM	
WC-10	DESIGNTEX	DW11, DNA	CUSTOM PRINT	54" WIDE		CLASS A	REF MANUFACTURERS INSTALLATION INSTRUCTIONS	"S2" PRINT SURFACE	JANYE WILKINS: 843-506-0801 JWILKINS@DESIGNTEX.COM	
WC-11	DESIGNTEX	DW11, DNA	CUSTOM PRINT	54" WIDE		CLASS A	REF MANUFACTURERS INSTALLATION INSTRUCTIONS	"S2" PRINT SURFACE	JANYE WILKINS: 843-506-0801 JWILKINS@DESIGNTEX.COM	
09 91 23	INTERIOR PAINTING									
EP-2	PPG	PITT-GLAZE WB ACRYLIC EPOXY	1009-2 TORNAVO		SEMI-GLOSS				STUART BROWN: 860-257-0297 SSBROWN@PPG.COM	
EP-3	PPG	PITT-GLAZE WB ACRYLIC EPOXY	1009-4 GRAY STONE		SEMI-GLOSS				STUART BROWN: 860-257-0297 SSBROWN@PPG.COM	
P-1	PPG	SPEEDHIDE ZERO INTERIOR LATEX	1025-5 COMMERCIAL WHITE		FLAT			CEILING WHITE	STUART BROWN: 860-257-0297 SSBROWN@PPG.COM	
P-2	PPG	SPEEDHIDE ZERO INTERIOR LATEX	1009-2 TORNAVO		EGGSHELL			BUILDING NEUTRAL	STUART BROWN: 860-257-0297 SSBROWN@PPG.COM	
P-3	PPG	SPEEDHIDE ZERO INTERIOR LATEX	1009-4 GRAY STONE		EGGSHELL			NEUTRAL ACCENT	STUART BROWN: 860-257-0297 SSBROWN@PPG.COM	
P-4	PPG	SPEEDHIDE ZERO INTERIOR LATEX	1009-8 ARMOYR		SEMI-GLOSS			HI DOOR FRAMES & STRUCTURE	STUART BROWN: 860-257-0297 SSBROWN@PPG.COM	
P-5	PPG	SPEEDHIDE ZERO INTERIOR LATEX	1123-5 MARBOLCHUIS		EGGSHELL			COLOR ACCENT	STUART BROWN: 860-257-0297 SSBROWN@PPG.COM	
P-6	PPG	SPEEDHIDE ZERO INTERIOR LATEX	1120-6 LUSCIOUS LIME		EGGSHELL			COLOR ACCENT	STUART BROWN: 860-257-0297 SSBROWN@PPG.COM	
P-7	PPG	SPEEDHIDE ZERO INTERIOR LATEX	1138-5 SLATE GREEN		EGGSHELL			COLOR ACCENT	STUART BROWN: 860-257-0297 SSBROWN@PPG.COM	
P-8	PPG	SPEEDHIDE ZERO INTERIOR LATEX	1144-4 FROSTY GLADE		EGGSHELL			COLOR ACCENT	STUART BROWN: 860-257-0297 SSBROWN@PPG.COM	
P-9	PPG	SPEEDHIDE ZERO INTERIOR LATEX	1156-6 SMOKE BLUE		EGGSHELL			COLOR ACCENT	STUART BROWN: 860-257-0297 SSBROWN@PPG.COM	
P-10	PPG	SPEEDHIDE ZERO INTERIOR LATEX	1056-5 EARTH ROSE		EGGSHELL			COLOR ACCENT	STUART BROWN: 860-257-0297 SSBROWN@PPG.COM	
P-11	PPG	SPEEDHIDE ZERO INTERIOR LATEX	1159-5 CINNAMON BRANDY		EGGSHELL			COLOR ACCENT	STUART BROWN: 860-257-0297 SSBROWN@PPG.COM	
P-12	PPG	SPEEDHIDE SUPER TECH 6-725XU WB INTERIOR LATEX DRYFLAT	1021-4 DIVERSION		FLAT			EXPOSED ROOF DECK	STUART BROWN: 860-257-0297 SSBROWN@PPG.COM	
09 93 00	STAINING AND TRANSPARENT FINISH									
WS-1	PPG	INTERIOR WOOD STAIN	TO MATCH ACCOYA - BARNWOOD - OLD TOWN GRAY						STUART BROWN: 860-257-0297 SSBROWN@PPG.COM	
10 21 13 17	PLASTIC TOILET COMPARTMENTS									
TR-4	SCRANTON PRODUCTS - HINY HIDERS		PARCHMENT		ORANGE PEEL	PASS, NFPA 286		REF SPECIFICATIONS	MICHAEL BODNAR: MBODNAR@SCRANTONPRODUCTS.COM	
10 26 00	WALL AND DOOR PROTECTION									
CG-1	CS ACRYVIN	LAG SERIES (CORNER GUARDS) LG-280	CLEAR	2.5" WIDE	BACK PAINTED IN FIELD TO MATCH CORNER OF WALL COLOR	CLASS A		NO PRE-DRILLED HOLES. MOUNT WITH 5/32" X 1/31" THICK DOUBLE SIDED FOAM TAPE. REF WALL FINISH PLAN FOR EXACT LOCATIONS	MEG EISEMAN: 570-772-8633 MEG@SPECPRO.US	
WP-1	CS ACRYVIN	0.060 HIGH IMPACT WALLCOVERING 4000	FOXSTONE 927	0.060" THICK, 4'X8' SHEET	SUEDE TEXTURE	CLASS A		REVELED, TRIMLESS TOP WITH NO VERTICAL TRIM JOINT AND NO INSIDE CORNER TRIM. INSTALL WITH WATER BASED MASTIC ADHESIVE. INSTALL UP TO 4'0" AFF	MEG EISEMAN: 570-772-8633 MEG@SPECPRO.US	
12 24 13	ROLLER WINDOW SHADES									
RS-1	MECHO	MECHO7 MANUAL SHADE SYSTEM (LIGHT FILTERING); FABRIC: SOHO COLLECTION 1800 SERIES, 5% OPEN	5% FABRIC: TBD		REF WALL FINISH PLAN FOR LOCATION AND EXTENT	NFPA 701		REF SPECIFICATIONS	FASCIA: TBD; MULTI-BANDING AS NEEDED	MATTHEW WOODS: 704-293-5695 MATTHEW.WOODS@MECHOSHADE.COM
RS-2	MECHO	DOUBLE-SHADES WITH 402-DC MOTORIZED SHADE SYSTEM (LIGHT FILTERING AND BLACKOUT)	5% FABRIC: TBD; BLACKOUT FABRIC: TBD		REF WALL FINISH PLAN FOR LOCATION AND EXTENT	NFPA 701		REF SPECIFICATIONS	FASCIA: TBD; MULTI-BANDING AS NEEDED	MATTHEW WOODS: 704-293-5695 MATTHEW.WOODS@MECHOSHADE.COM
RS-3	MECHO	MECHO7 WITH 402-DC MOTORIZED SHADE SYSTEM (LIGHT FILTERING)	5% FABRIC: TBD		REF WALL FINISH PLAN FOR LOCATION AND EXTENT	NFPA 701		REF SPECIFICATIONS	FASCIA: TBD; MULTI-BANDING AS NEEDED	MATTHEW WOODS: 704-293-5695 MATTHEW.WOODS@MECHOSHADE.COM
12 36 61 16	SOLID SURFACE COUNTERTOPS									
SS-1	DUPONT	CORIAN SOLID SURFACE	ASH CONCRETE	1/2" THICK				MITER EDGE	BARBARA DAVIS: 704-301-8078 BDAVIS@CHBRIGGS.COM	
12 36 61 19	QUARTZ AGGLOMERATE COUNTERTOPS									
QTZ-1	DUPONT	CORIAN QUARTZ SURFACE	CALACATTA NATURA	2 CM					BARBARA DAVIS: 704-301-8078 BDAVIS@CHBRIGGS.COM	
QTZ-2	DUPONT	CORIAN QUARTZ SURFACE	COARSE PEPPER LEATHERED	2 CM					BARBARA DAVIS: 704-301-8078 BDAVIS@CHBRIGGS.COM	
12 48 13	ENTRANCE FLOOR MATS AND FRAMES									
WOF-2	MILLIKEN	ORFX GRID / OPEN / CUT X	GREY	188 X 188 MM				EXTERIOR WALK-OFF SYSTEM, RECESSED IN SLAB	HEDI BURMEISTER: 704-661-1876 HEDI.BURMEISTER@MILLIKEN.COM	

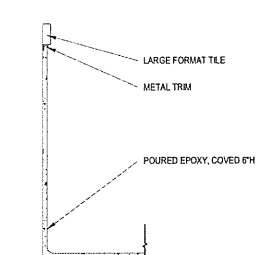
GENERAL NOTES

- REF FINISHES AND MATERIAL SCHEDULE FOR MATERIAL AND COLOR INFORMATION AND ROOM FINISH SCHEDULES FOR SELECTIONS. ROOM FINISH SCHEDULES ARE BASED ON PLAN NORTH. REF FLOOR AND WALL FINISH PLANS FOR EXTENT OF FINISH ACCENT LOCATIONS AND PATTERNS.
- ALL ACCESS PANELS, SPRINKLER HEADS, AND OTHER SIMILAR ITEMS SHALL BE PAINTED TO MATCH THE COLOR OF THE SURROUNDING WALL OR CEILING UNLESS PREPARED BY MANUFACTURER OR LINO.
- ALL ITEMS EXPOSED TO VIEW SHALL BE PAINTED OR STAINED UNLESS PREPARED BY MANUFACTURER OR LINO.
- REF RCP FOR MATERIAL EXTENT AND TYPES. REF "CEILING" COLUMN OF ROOM FINISH SCHEDULE FOR APPLICABLE CEILING, SOFFIT, AND BULKHEAD FINISHES.
- CONTRACTOR SHALL NOTIFY ARCHITECT OF ANY EXPOSED SURFACE NOT HAVING A FINISH SPECIFIED BEFORE SUBMITTING BID.
- IT IS THE RESPONSIBILITY OF THE CONTRACTOR TO CHECK LEAD TIMES ON FINISHES IN ORDER TO AVOID DELAYING WORK.

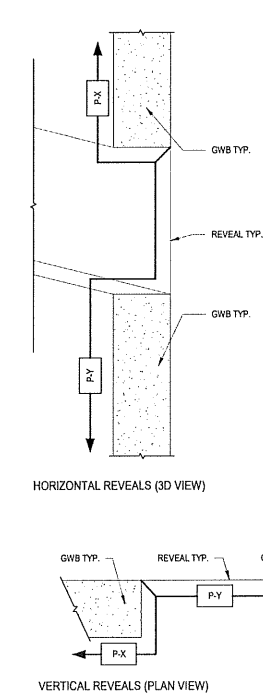
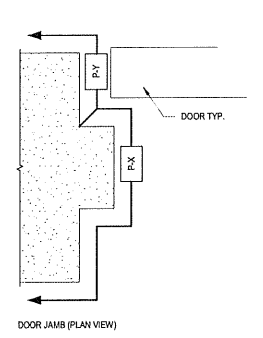
ABBREVIATIONS

CG	CORNER GUARD	RB	RESILIENT BASE
CPT	CERAMIC TILE	RS	ROLLER WINDOW SHADES
EP	EPOXY PAINT	SS	SOLID SURFACE
EPX	POURED EPOXY FLOORING	TP	TOILET PARTITION
EXP	EXPOSED ROOF DECK	TR	TRIM
FRT	FLOCKED RESILIENT TILE	TRS	TRANSITION STRIP
LVT	LUXURY VINYL TILE	WC	WALLCOVERING
P	PAINT	WOF	WALK-OFF CARPET TILE
PLAM	PLASTIC LAMINATE	WP	WALL PROTECTION
QTZ	QUARTZ		

EPOXY COVE BASE DETAIL



PAINT TERMINATION DETAILS



ROOM FINISH SCHEDULE

ROOM NO.	ROOM NAME	FLOOR				WALLS				CEILING		MILLWORK		NOTES
		FLOOR	BASE	N	E	S	W	MATERIAL	FINISH	COUNTERTOPS	CABINETS			
LEVEL 1														
100	VESTIBULE	WOF-1	RB-2	P-2	P-2	P-2	P-2	EXP/GYP	P-12P-1	QTZ-2				
101	ENTRANCE	CPT-2	RB-2	P-2	P-2	P-2	P-2	EXP	P-12	QTZ-1,2				*REF MILLWORK DETAILS FOR EXACT EXTENT AND LOCATION
102	MECH	SC	RB-1	P-2	P-2	P-2	P-2	EXP	P-12					
103	RESTROOM	EPX-1 (6\"/>												



FOR CONSTRUCTION

SHEET ISSUE:	NO.	DATE	DESCRIPTION	BY
	1	07/20/2022	PERMIT SET	
	2	09/20/2022	COUNTY COMMENTS 1	
		11/16/2022	COUNTY COMMENTS 2	

PRINCIPAL IN CHARGE: DRU
PROJECT ARCHITECT: WB
DRAWN BY: MNW

SHEET TITLE:
**INTERIOR FINISHES
AND MATERIALS
SCHEDULES**